



HM516

10" Android Rugged Tablet



A Truly Affordable Purpose-Built Tablet

Run your retail or hospitality business more efficiently with the stylish, reliable and space-saving HM516 Android Rugged Tablet. The 10.1 inch, bezel-free and wide screen display is designed with Projected Capacitive (PCAP) touch technology that helps to extend the operating life and allow multi-touch control. Use the ports in the docking station to connect to a wide range of peripheral devices.

- 10.1" Wide Screen
- Bezel-Free Flat PCAP Multi-Touch
- Android Operating System
- Standard Integrated Card Reader
- Standard Docking Station with I/O Expansion
- Sturdy Hand Strap Standard
- Meets MIL-STD810G Standards for Shock and IP54 Standards for Exposure to Water and Dust



Bluetooth™



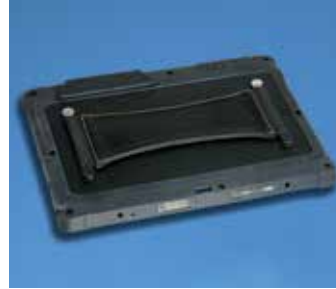
HM516 – 10" Android Rugged Tablet



Stylish, Space-Saving Rugged Tablet Includes Docking Station



Lift the Rear Panel to Access the Docking Station's Ports



Standard Sturdy Hand Strap



Integrated Card Reader Standard

Features

- Front and Rear Cameras
- Integrated Card Reader
- 1 Watt Speaker
- Sturdy Hand Strap
- 3 LED Indicators
- Protected Against Dust and Water Sprayed From All Directions (IP Grade IP54)
- Withstands a Drop of 3 Feet Onto Concrete (MIL-STD-810G)
- HM516 Rugged Tablet Includes a Built-In Battery, MCR, and a Recharger with Cable. Standard Docking Station includes, Power Adaptor and Cord

Optional Devices / Upgrades

The HM516 Tablet is available by special order with these features:

- Integrated 1D Barcode Scanner
- 3G (WCDMA GPRS)

Specifications

Processor:		HM516	Freescall i.mx6 Quad-Core Arm Cortex-A9 1.0GHz
Operating System:			Android 4.2 Multi-Language
Display:			10.1" TFT LCD (LED Back-Light)
Resolution:			1280 x 800
Brightness:			330 cd/m2
Touch Panel:			True-Flat Projected Capacitive Touch
Memory:			2GB RAM
Storage:			16GB eMMC
Camera –	Front:		2 Megapixel Camera
	Back:		5 Megapixel Camera (Supports 2D Barcode Function)
Wireless –	Wi-Fi:		WiFi802.11bgn 2.4GHz
	Bluetooth:		Integrated Bluetooth V4.0
Speaker:			8 Ohm, 1 Watt Speaker
Audio:			3.5mm Socket
MCR:			Standard Integrated Triple Track Card Reader
Battery –	Type:		8000mAh (Minimum)
	Life:		6 Hours
I/O Interface:			Micro-SD Slot / SIM Card Slot / USB / Micro-USB
Tablet Connector:			24 Pin Pogo Style Connector
Docking Station I/O –	USB:		Three USB2.0 (2 Rear Panel / 1 Right Side)
	LAN:		One RJ45 (100Mbps LAN)
	Serial:		Two RS232C
	VGA:		One VGA Reserved for Second Display
	Cash Drawer:		One RJ11 – 12V/24V (24V Default)
DC Input:			One DC Jack (12V)
Power –	Tablet:		5V/2.0A External Power Adaptor 100-240V 50/60Hz
	Docking Station:		12V/3.33A External Power Adaptor 100-240V 50/60Hz
Temperature –	Operating:		32° F to 104° F (0° C to 40° C)
	Storage:		-4° F to 140° F (-20° C to 60° C)
Humidity –	Operating:		20% to 80% RH (Non-Condensing)
	Storage:		10% to 90% RH (Non-Condensing)
Dimensions –	Tablet:		10-7/8"W x 7-5/8"H x 7/8"D
	Tablet/Docking Station:		11"W x 6-5/8"H x 7-1/16"D
Safety and EMI:			FCC Class-B / CE Class-B / RoHS



All product and company names are trademarks, service marks or registered trademarks of their respective owners. All features and specifications are subject to change without notice.

© 2015, Printed in U.S.A.

LIT-278

